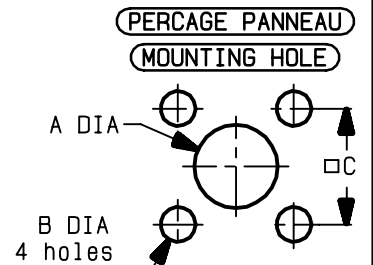
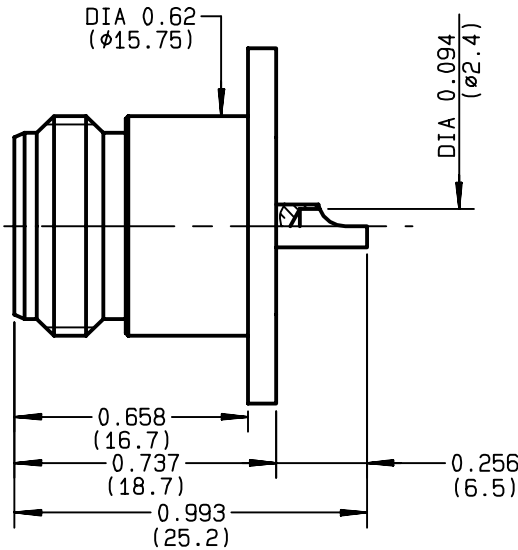
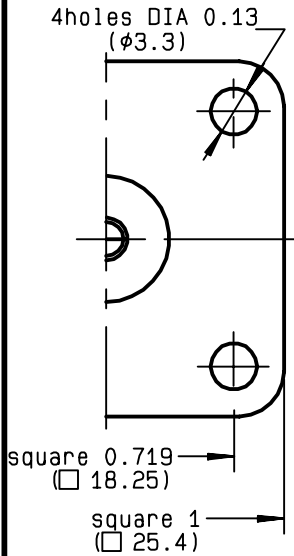


**SQUARE FLANGE JACK RECEPTACLE  
WITH SOLDER POT CONTACT**

**R161.430.020**  
**SERIES N**



|   | MM    |       | INCH  |       |       |
|---|-------|-------|-------|-------|-------|
|   | maxi  | mini  | maxi  | mini  |       |
| A | Front | 16.3  | 16.1  | 0.642 | 0.634 |
|   | Rear  | 12.5  | 12.3  | .492  | 0.484 |
| B |       | 3.3   | 3.2   | 0.13  | 0.126 |
| C |       | 18.35 | 18.15 | 0.722 | 0.715 |

|                                 |  |
|---------------------------------|--|
| NOMINAL IMPEDANCE               | <b>50</b> Ω                            |
| FREQUENCY RANGE                 | <b>0-11</b> GHz                        |
| TEMPERATURE RATING              | <b>-55/+155</b> °C                     |
| V.S.W.R                         | <b>1.04</b> + <b>.004</b> x F(GHz)Maxi |
| RF INSERTION LOSS               | <b>0.015</b> √F(GHz) dB Maxi           |
| VOLTAGE RATING                  | <b>1400</b> Veff Maxi                  |
| DIELECTRIC WITHSTANDING VOLTAGE | <b>2500</b> Veff Mini                  |
| INSULATION RESISTANCE           | <b>5000</b> MΩMini                     |
| HERMETIC SEAL                   | <b>NA</b> Atm.cm <sup>3</sup> /s       |
| LEAKAGE (pressurized only)      | <b>NA</b>                              |
| MECHANICAL DURABILITY           | <b>500</b> Cycles                      |
| WEIGHT                          | <b>26.3</b> gr                         |
| SPECIFICATION                   |  |

CABLES :

OTHERS CHARACTERISTICS

|                            |           |           |
|----------------------------|-----------|-----------|
| CABLE RETENTION            | <b>NA</b> | N Mini    |
| CENTER CONTACT RETENTION   |           |           |
| Axial force - mating end   | <b>27</b> | N Mini    |
| Axial force - opposite end | <b>27</b> | N Mini    |
| Torque                     | <b>NA</b> | cm.N Mini |
| RECOMMENDED TORQUES        |           |           |
| Mating                     | <b>NA</b> | cm.N      |
| Panel nut                  | <b>NA</b> | cm.N      |
| Clamp nut                  | <b>NA</b> | cm.N      |

| CONNECTOR PARTS | MATERIALS        | FINISH                 | (all values are given in micrometers) |
|-----------------|------------------|------------------------|---------------------------------------|
| BODY            | BRASS            | BBR 2                  |                                       |
| OUTER CONTACT   | BRASS            | BBR 2                  |                                       |
| CENTER CONTACT  | BERYLLIUM COPPER | GOLD 0.5 OVER NICKEL 2 |                                       |
| INSULATOR       | PTFE             | -                      |                                       |
| GASKET          |                  | -                      |                                       |
| OTHERS PIECES   |                  |                        |                                       |

|                |                   |                  |
|----------------|-------------------|------------------|
| ISSUE          | CREATION DATE     | FILE PART-NUMBER |
| <b>9847A01</b> | <b>16/01/1997</b> | <b>EPC 96-07</b> |



GUERIN

The information given here is subject to change without notice.  
Design changes may be in order to improve the product .

*Connect to the future*